

**MAVERICK**  
MATERIAL HANDLING

7200 White St. Fort Worth  
TEXAS 76135 United States

+1 786.340.6550  
[www.maverickmth.com](http://www.maverickmth.com)

**FORKLIFT SERIES**  
MAVERICK POWER LIFT  
YOUR BUSINESS





Maverick Material Handlers Heavy Machinery Manufacture Co, Ltd Dedicates To The R & D Of Material Handling Equipment, Construction Machineries And New Energy Construction & Port Machineries Such As Heavy Duty Forklift, Crane Forklift, Telehandler, Electric Excavator, Electric Wheel Loader, Extended Range Electric Wheel Loader, Electric Heavy Duty Forklift, Etc And Furnace-Tending Vehicle & Furnace-Charging Vehicle Which Is Customized For Using In The Metal Smelting Industry



# COMPANY PROFILE

## • THE MISSION OF MAVERICK

The mission of MAVERICK is dedicating to provide the most rugged and durable, high cost-effectiveness, high return rate material handling equipment, construction machinery products and service to our client.

## • THE VISION OF MAVERICK

Let MAVERICK become the respectable international brand from World

## • THE CORE VALUE OF MAVERICK

Customer Oriented, Staff Foremost. Insist On Self Criticism and Introspection, MAVERICK Is Growing Up Always



# ADVANTAGES OF MAVERICK HEAVY DUTY FORKLIFTS

## 01 Driving Axle

- 1.1** The front axle adopts a heavy-duty forklift drive axle. The axle housing, wheel hub and bearing are enlarged in size. The spiral bevel gear and wheel side planetary gear reduce speed and increase the torque. The steel type axle housing support, ensure the large load capacity and long service life.
- 1.2** Using non-spoke pressure plate rim, the wheel hub has a stronger bearing capacity and is convenient for maintenance and disassembly.
- 1.3** The rear axle adopts a horizontal hydraulic cylinder steering mechanism. The steering axle has a compact structure and a steering angle is up to 70.5°, which is beneficial to reduce steering resistance, reduce tire wear, and improve driving comfort.
- 1.4** German Kessler driving axle is optional.

## 02 Transmission

- 2.1** Standard equipped with domestic famous brand planetary transmission, automatic shift transmission can change gears very smoothly, reliable, safe, and easy to maintain.
- 2.2** It adopts double-turbo hydraulic torque converter, stepless speed change, single lever control speed change system, which makes the operation easier.
- 2.3** Equipped With A Neutral Start Device, The Whole Machine Starts More Safety.
- 2.4** Optional With Electric Transmission, Electric Control Valve, German ZF Transmission, And Power Shift Fixed Axis Hydraulic Transmission For Forklifts.

## 03 Hydraulic System

- 3.1** Double pumps merge, steering priority hydraulic system. The system has small flow, low power consumption, reliable performance and excellent operating performance.



**3.2** The hydraulic system is equipped with oil return radiator and back pressure protection device to ensure the heat balance of the whole machine.

**3.3** The single-handle joystick control valve and electronically controlled variable speed control valve, make operation of the whole machine lighter and more flexible. Highlight the characteristics of high-quality material handling products.

**3.4** Full hydraulic load sensing steering system, the rear steering axle has small turning radius, and the steering is light and dexterous.

## 04 Chassis System

**4.1** The long wheelbase, box-shaped double-beam frame can provide good rigidity and strength to ensure the high reliability of the forklift chassis.

**4.2** The main structure is subjected to Finite Element Analysis (FEA) (fatigue and strength analysis) to ensure that there is still enough safety margin under severe working conditions; the workmanship is exquisite and firm. Effectively cooperate with axles and transmission to ensure the lateral and longitudinal stability and energy saving of the entire vehicle operation process.

## 05 Power System

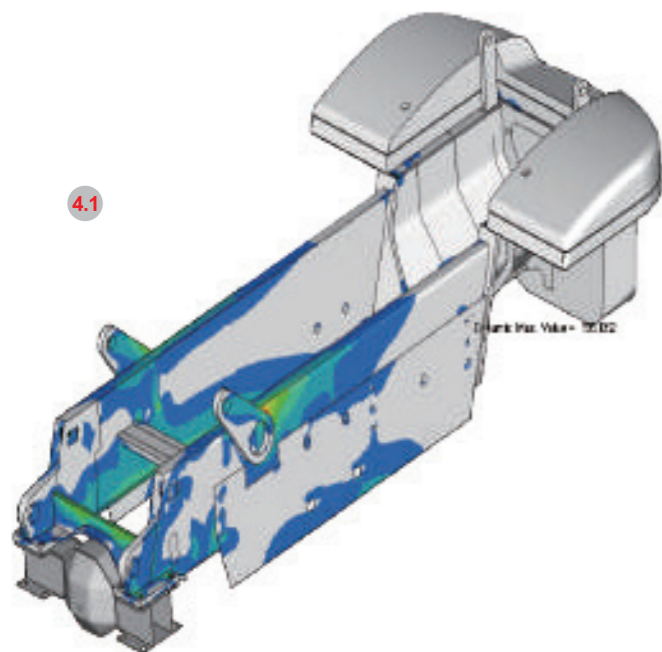
**5.1** Equipped well-known turbocharged engine: strong horsepower, large torque reserve, low fuel consumption, high reliability; easy access to accessories.

**5.2** Optional with Weichai, Cummins, Yuchai, Volvo, and other brands.

## 06 Cooling System

**6.1** Engine large-capacity radiator with sufficient heat dissipation capacity.

**6.2** Transmission oil and hydraulic oil radiators are equipped independently, to improve system stability.



## 07 Lifting Components

**7.1** Reinforced design of special mine carriage and mast; through Finite Element Analysis (FEA), it has the ability to resist and high-intensity operations.

**7.2** Standard equipped with a widened duplex mast, which enhances the torsion resistance of the mast, and has a wide field of vision; double speed limit valve oil circuit (the mast is lowered with a speed limit valve to reduce the impact of the hydraulic system), which is more safe.

**7.3** Optional with duplex and triplex free lifting mast. Standard with hydraulic heavy-duty side shift fork positioner.

**7.4** The forks are interchangeable and can be replaced quickly; Standard with Cascade brand forks, which are stronger, more wear-resistant, and can double their service time.



## 08 Cab

**8.1** The luxurious wide-view cab is equipped with a sunroof, which has low noise and good sealing, which is convenient for the driver to observe all around.

**8.2** The steering wheel is adjustable, small and dexterous, which enlarge the space for driver's leg; Supplemented by luxury airline seats to bring comfortable and flexible operation experience.

**8.3** Equipped with air-conditioner and heater; new LCD instrument (above 18 tons, optional for small tonnage) CAN integration, the engine and vehicle related parameters are integrated, high-end and beautiful appearance.

**8.4** Optional tilting cab (12-18 tons) for easy access to the interior of the vehicle for maintenance.

**8.5** All series forklifts are equipped with a reversing display screen; weight counter can be installed based on customer requirements.

**8.6** It adopts domestic high-quality electrical components, maintenance-free storage battery, and the wire adopts anti-flame retardant materials, which is reliable and durable.



## 09 Braking System

**9.1** Choose 4 sets of heavy-duty caliper disc brakes: thickened brake discs, fast heat dissipation, good high temperature resistance under high load, stable braking effect; simple structure and convenient adjustment

**9.2** Rear air storage tank, 18 times brake air pressure booster ratio, light brake weight.



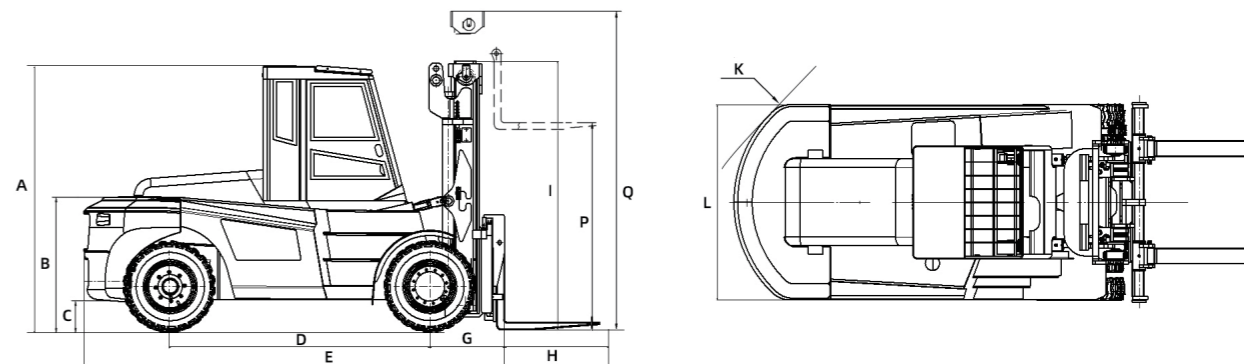
# 12-160sTON

INNOVATE | BREACH | GROW UP

OUR QUALITY IS IN THE HABIT



Items		Unit	MVF-120	MVF-135	MVF-150S	MVF-160S
Features	Rated Load	(t)	12	13.5	15	16
	Load center	(mm)	600	600	600	600
	D Wheelbase	(mm)	3000	3000	3300	3300
	Weight	kg	18000	18500	19500	19500
Chassis	Tyre Specs:Front		10.00-20-18PR	11.00-20-18PR	12.00-20-16PR	12.00-20-18PR
	Tyre Specs:Rear		10.00-20-18PR	11.00-20-18PR	11.00-20-16PR	11.00-20-18PR
	Tyres Qty,fronVrear(X-drive wheels)		4\2	4\2	4\2	4\2
	Wheel tread:Front	(mm)	1677	1677	1740	1740
	Wheel tread:Rear	(mm)	2013	2013	2013	2013
	Mast/carriage tilt angle(front/rear)	(°)	6\12	6\12	6\12	6\12
Dimension	I Mast height(fork lowering)	(mm)	3100	3100	3140	3140
	P Mast lifting height	(mm)	3000	3000	3000	3000
	Q Max.lifting height	(mm)	4600	4600	4640	4640
	Height to head guard(height to cab)	(mm)	3000	3000	3040	3040
	F Overall length(with forks)	(mm)	6055	6055	6355	6355
	E Fork front vertical surface to the rear end of the vehicle	(mm)	4855	4855	5155	5155
	L Overall width	(mm)	2250	2250	2400	2400
	Fork dimension	(mm)	1200X180X90	1200X180X90	1200X180X90	1200X180X90
	Fork carriage width	(mm)	2200	2200	2200	2200
	Mast min ground clearance(with load)	(mm)	225	225	225	225
	Wheelbase center min ground clearance(with load)	(mm)	350	350	350	350
	K Min.Turning radius	(mm)	5500	5500	5800	5800
	Travel speed(with load/without load)	km/h	23/26	23/26	23/26	23/26
	Performance	Max.lifting speed(with load/without load)	mm/s	220/270	220/270	205/255
Max. Lowering speed (with load/without load)		mm/s	450/300	450/300	435/285	435/285
Traction		kN	90	90	90	90
Gradeability(with load/without load)		%	20/22	20/22	20/22	20/22
Driving brake		Hydraulic clamp disc				
Engine	Engine brand/model	Optional one	Yuchai engine	Yuchai engine	Yuchai engine	
			YC6J150-T301	YC6J150-T301	YC6J150-T301	
		Optional two	Cummins	Cummins	Cummins	
		Optional three	Cummins	Cummins	Cummins	
			QSB4.5-C130 (EU III)	QSB4.5-C130 (EU III)	QSB4.5-C130 (EU III)	
Cylinder No.						
Others	Transmission gears(Front/rear)		2\2	2\2	2\2	2\2
	Attachments working pressure	MPa	16	16	16	16
	Attachments using oil amount	L/min	40	40	60	40



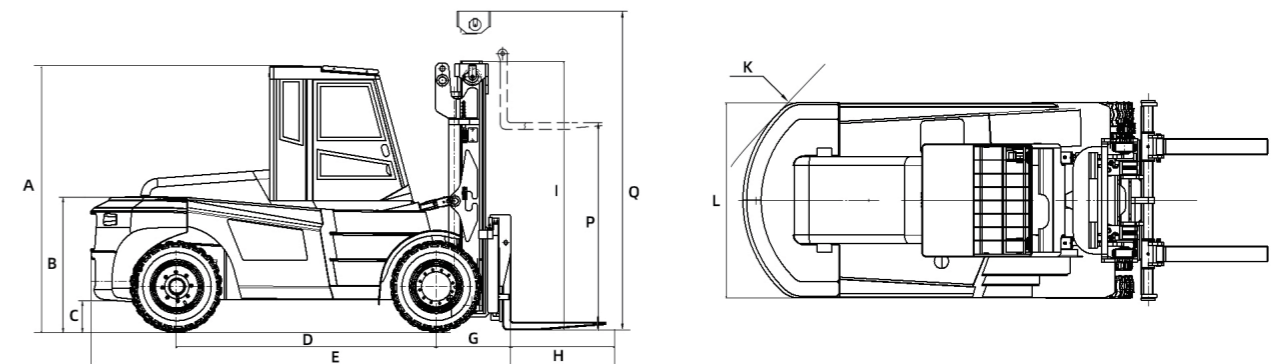
# 15-18TON

INNOVATE | BREACH | GROW UP

OUR QUALITY IS IN THE HABIT



Items		Unit	MVF-150	MVHNF-160	MVF-180
Features	Rated Load	(t)	15	16	18
	Load center	(mm)	900	900	900
	D Wheelbase	(mm)	3800	3800	3800
Chassis	Weight	kg	24000	25000	27800
	Tyre Specs:Front		12.00-24-18PR	12.00-24-18PR	12.00-24-18PR
	Tyre Specs:Rear		12.00-20-18PR	12.00-20-18PR	12.00-20-18PR
	Tyres Qty,front/rear(X-drive wheels)		4\2	4\2	4\2
	Wheel tread:Front	(mm)	2060	2060	2060
	Wheel tread:Rear	(mm)	2330	2330	2330
Dimension	Mast/carriage tilt angle(front/rear)	(°)	6\12	6\12	6\12
	I Mast height(fork lowering)	(mm)	3625	3625	3675
	P Mast lifting height	(mm)	3500	3500	3500
	Q Max.lifting height	(mm)	5375	5375	5425
	Height to head guard(height to cab)	(mm)	3365	3365	3365
	F Overall length(with forks)	(mm)	7640	7640	7640
	E Fork front vertical surface to the rear end of the vehicle	(mm)	5840	5840	5840
	L Overall width	(mm)	2750	2750	2750
	Fork dimension	(mm)	1800X220X100	1800X220X100	1800X220X100
	Fork carriage width	(mm)	2700	2700	2700
	Mast min ground clearance(with load)	(mm)	265	265	265
	Wheelbase center min ground clearance(with load)	(mm)	325	325	325
	K Min.Turning radius	(mm)	5800	6500	5800
Performance	Travel speed(with load/without load)*	km/h	26/30	26/30	26/30
	Max.lifting speed(with load/without load)	mm/s	250/260	250/260	250/260
	Max. Lowering speed (with load/without load)	mm/s	430/330	430/330	430/330
	Traction	kN	150	150	150
	Gradeability(with load/without load)	%	20/22	20/21	20/21
	Driving brake			Hydraulic clamp disc	
Engine	Engine brand/model	Optional one	Yuchai engine YC6J150-T301	Yuchai engine YC6J175-T302	Yuchai engine YC6J175-T302
		Optional two	Cummins	Cummins	Cummins
		Optional three	Cummins QSB6.7-C190 (EU III)	Cummins QSB6.7-C190 (EU III)	Cummins QSB6.7-C190 (EU III)
		Cylinder No.	6	6	6
		Others	Transmission gears(Front/rear)		2\1
Attachments working pressure	MPa		16	16	16
Attachments using oil amount	L/min		60	60	60



# 20-25TON

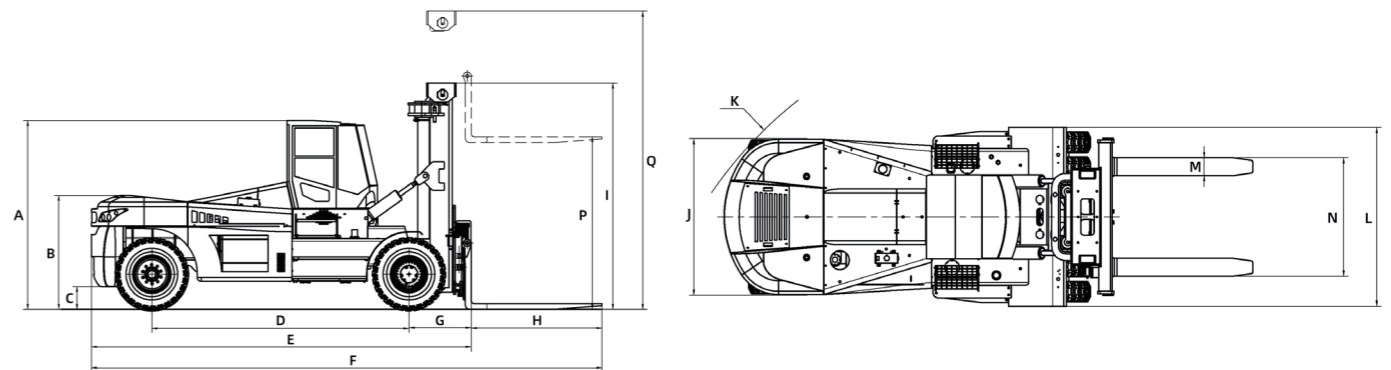
INNOVATE | BREACH | GROW UP

OUR QUALITY IS IN THE HABIT



## Technical Data

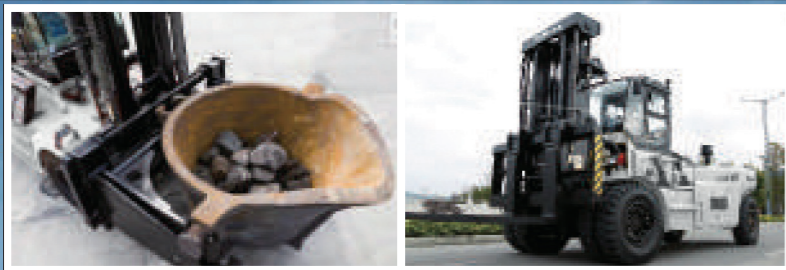
Items		Unit	MVF-200	MVF-220	MVF-250
Features	Rated Load	(t)	20	22	25
	Load center	(mm)	1250	1250	1250
	D Wheelbase	(mm)	4000	4000	4400
Chassis	Weight	kg	32500	33500	35000
	Tyre Specs:Front		14.00-24-28PR	14.00-24-28PR	14.00-24-28PR
	Tyre Specs:Rear		14.00-24-28PR	14.00-24-28PR	14.00-24-28PR
	Tyres Qty,fronVrear(X-drive wheels)		4\2	4\2	4\2
	Wheel tread:Front	(mm)	2200	2200	2200
	Wheel tread:Rear	(mm)	2390	2390	2390
Dimension	Mast/carriage tilt angle(front/rear)	(°)	6\12	6\12	6\12
	I Mast height(fork lowering)	(mm)	3860	3860	3860
	P Mast lifting height	(mm)	3500	3500	3500
	Q Max.lifting height	(mm)	5610	5610	5610
	Height to head guard(height to cab)	(mm)	3510	3510	3510
	F Overall length(with forks)	(mm)	8340	8340	9190
	E Fork front vertical surface to the rear end of the vehicle	(mm)	6345	6345	6745
	L Overall width	(mm)	3050	3050	3050
	Fork dimension	(mm)	2000X280X100	2000X280X100	2440X300X110
	Fork carriage width	(mm)	3050	3050	3050
	Mast min ground clearance(with load)	(mm)	300	300	300
	Wheelbase center min ground clearance(with load)	(mm)	420	420	420
Performance	K Min.Turning radius	(mm)	6250	6250	6700
	Travel speed(with load/without load)"	km/h	26/30	26/30	25/29
	Max.lifting speed(with load/without load)	mm/s	260/270	260/270	260/270
	Max. Lowering speed (with load/without load)	mm/s	310/260	310/260	315/260
Engine	Traction	kN	170	170	170
	Gradeability(with load/without load)	%	20/22	20/22	20/21
	Driving brake			Hydraulic clamp disc	
	Engine	Engine brand/model	Optional one	Weichai engine WP10G220E343	Weichai engine WP10G220E343
Optional two			Cummins	Cummins	Cummins
Optional three			Cummins QSL9.3-C220 ( EUIII)	Cummins QSL9.3-C220 (EUIII)	Cummins "QSL9.3-C220(EUIII)
Cylinder No.			6	6	6
Others	Transmission gears(Front/rear)		2\1 ; 3/3	2\1 ; 3/3	2\1 ; 3/3
	Attachments working pressure	MPa	16	16	16
	Attachments using oil amount	L/min	60	60	60



# 28-32TON

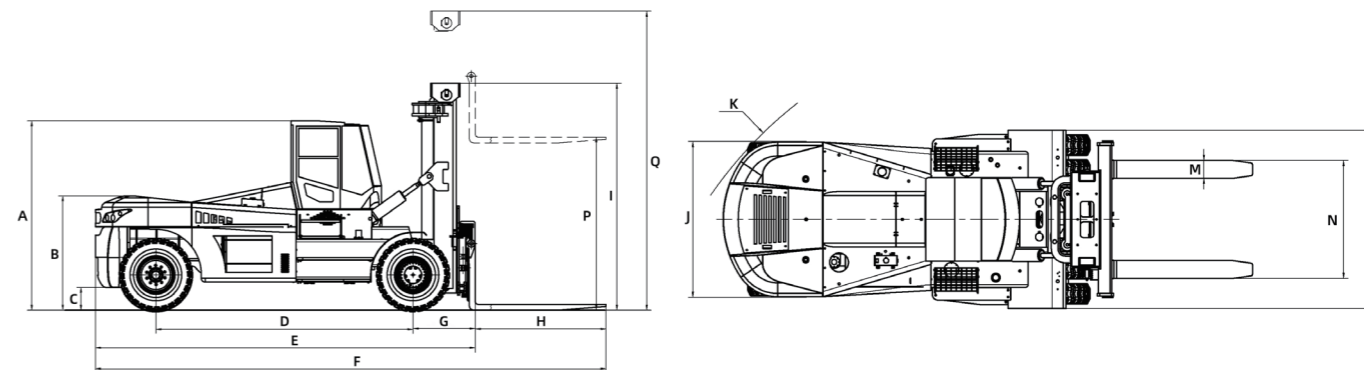
INNOVATE | BREACH | GROW UP

OUR QUALITY IS IN THE HABIT



## Technical Data

Items	Unit	MVF-280	MVF-300	MVF-300H	MVF-320	
Features	Rated Load	(t)	28	30	30	32
	Load center	(mm)	1250	1250	1250	1250
	D Wheelbase	(mm)	4800	4800	4800	4800
Chassis	Weight	kg	39000	40000	45000	41000
	Tyre Specs:Front		14.00-24-32PR	14.00-24-32PR	16.00-25-32PR	14.00-24-32PR
	Tyre Specs:Rear		14.00-24-32PR	14.00-24-32PR	16.00-25-32PR	14.00-24-32PR
	Tyres Qty,frontRear(X-drive wheels)		4\2	4\2	4\2	4\2
	Wheel tread:Front	(mm)	2420	2420	2800	2420
	Wheel tread:Rear	(mm)	2390	2390	2450	2390
Dimension	Mast/carriage tilt angle(front/rear)	(°)	6\12	6\12	3\4	6\12
	I Mast height(fork lowering)	(mm)	3950	3950	6460	3950
	P Mast lifting height	(mm)	3500	3500	8100	3500
	Q Max.lifting height	(mm)	5700	5700	10520	5700
	Height to head guard(height to cab)	(mm)	3800	3800	4750	3800
	F Overall length(with forks)	(mm)	9590	9590	9590	9590
	E Fork front vertical surface to the rear end of the vehicle	(mm)	7150	7150	7500	7150
	L Overall width	(mm)	3200	3200	3800	3200
	Fork dimension	(mm)	2440X320X110	2440X320X110	2440X320X110	2440X320X110
	Fork carriage width	(mm)	3100	3100	3100	3100
	Mast min ground clearance(with load)	(mm)	350	350	400	350
	Wheelbase center min ground clearance(with load)	(mm)	410	410	460	410
	K Min.Turning radius	(mm)	7260	7260	7260	7260
	Travel speed(with load/without load)	km/h	24/28	24/28	25/28	24/28
Performance	Max.lifting speed(with load/without load)	mm/s	260/280	260/280	260/280	260/280
	Max. Lowering speed (with load/without load)	mm/s	250/180	250/180	250/180	250/180
	Traction	kN	220	220	220	220
	Gradeability(with load/without load)	%	20/21	20/21	20/20	20/21
Driving brake		Hydraulic clamp disc				
Engine	Optional one	Weichai engine	Weichai engine	Weichai engine	Weichai engine	
		WP10G240E341	WP10G240E341	WP10G240E341	WP10G240E341	
	Optional two	Cummins	Cummins	Cummins	Cummins	
		QSL9.3-C240 ( EUIII)	QSL9.3-C240 ( EUIII)	QSL9.3-C240 ( EUIII)	QSL9.3-C240 ( EUIII)	
	Cylinder No.	6	6	6	6	
Others	Transmission gears(Front/rear)		2\1	2\2	2\1	2\1
	Attachments working pressure	MPa	18	16	18	18
	Attachments using oil amount	L/min	80	40	80	80



# 35-50TON

INNOVATE | BREACH | GROW UP

OUR QUALITY IS IN THE HABIT



Items		Unit	MVF-350	MVF-360	MVF-400H	MVF-450H	MVF-500
Features	Rated Load	(t)	35	36	40	45	50
	Load center	(mm)	1250	1250	1250	1250	1250
	D Wheelbase	(mm)	4800	5000	5000	5500	6000
Chassis	Weight	kg	43000	49000	55000	60000	62000
	Tyre Specs:Front		16.00-25-32PR	16.00-25-32PR	18.00-25-40PR	18.00-25-40PR	18.00-25-40PR
	Tyre Specs:Rear		16.00-25-32PR	16.00-25-32PR	18.00-25-40PR	18.00-25-40PR	18.00-25-40PR
	Tyres Qty,frontrear(X-drive wheels)		4\2	4\2	4\2	4\2	4\2
	Wheel tread:Front	(mm)	2400	2467	3030	3030	3030
Dimension	Wheel tread:Rear	(mm)	2450	2657	2786	2786	2786
	Mast/carriage tilt angle(front/rear)	(°)	6\12	6\12	5\10	5\10	5\10
	I Mast height(fork lowering)	(mm)	4010	4010	4625	4625	5050
	P Mast lifting height	(mm)	3500	3500	4000	4000	4000
	Q Max.lifting height	(mm)	5760	5760	6560	6560	6975
	Height to head guard(height to cab)	(mm)	3860	3860	3900	3900	3900
	F Overall length(with forks)	(mm)	9700	9700	9900	10400	11000
	E Fork front vertical surface to the rear end of the vehicle	(mm)	7150	7300	8000	8350	8600
	L Overall width	(mm)	3320	3440	4160	4160	4160
	Fork dimension	(mm)	2440X340X125	2440X340X130	2400X300X135	2400X300X135	2400X300X150
	Fork carriage width	(mm)	3100	3200	3400	3400	3400
	Mast min ground clearance(with load)	(mm)	400	400	300	300	300
	Wheelbase center min ground clearance(with load)	(mm)	460	460	460	460	460
Performance	K Min.Turning radius	(mm)	7260	7260	8000	8150	8500
	Travel speed(with load/without load)	km/h	25/28	25/28	22/25	22/25	22/24
	Max.lifting speed(with load/without load)	mm/s	260/280	260/280	200/250	200/250	150/200
	Max. Lowering speed (with load/without load)	mm/s	250/180	250/180	430/330	430/330	400/300
Performance	Traction	kN	220	260	250	250	250
	Gradeability(with load/without load)	%	20/20	20/20	25	25	25
Engine	Driving brake		Hydraulic clamp disc				
	Engine brand/model	Optional one	Weichai engine		Cummins		
			WP10G240E341		QSM11-C335 (EUIII)		
		Optional two	Cummins				
		Optional three	Cummins				
	QSL9.3-C240 (EUIII)						
Cylinder No.		6		6			
Others	Transmission gears(Front/rear)		2\1	3/3	Torque convertor		
	Attachments working pressure	MPa	18	18			
	Attachments using oil amount	L/min	80	80			

