

**MAVERICK**  
MATERIAL HANDLING

# MAVERICK LIFTING

**MAVERICK**

2450 Lakeside Parkway  
Flower Mound, TEXAS 75022  
United States

**+1 786.340.6550**  
**[www.maverickmth.com](http://www.maverickmth.com)**





THE EXCELLENCE DERIVED FROM PROFESSIONALISM





# D1

## SECURITY

Advanced design and intelligent warning systems increase equipment stability, ensuring safe and reliable vehicle operation.



# MULTI-SECTION BOOM

## BOOM

Booms use high-strength reinforced steel and scientifically optimized designs to ensure greater safety and reliability.

The arms synchronize extension and retraction during operation, automatically maintaining the horizontal positioning of the load.





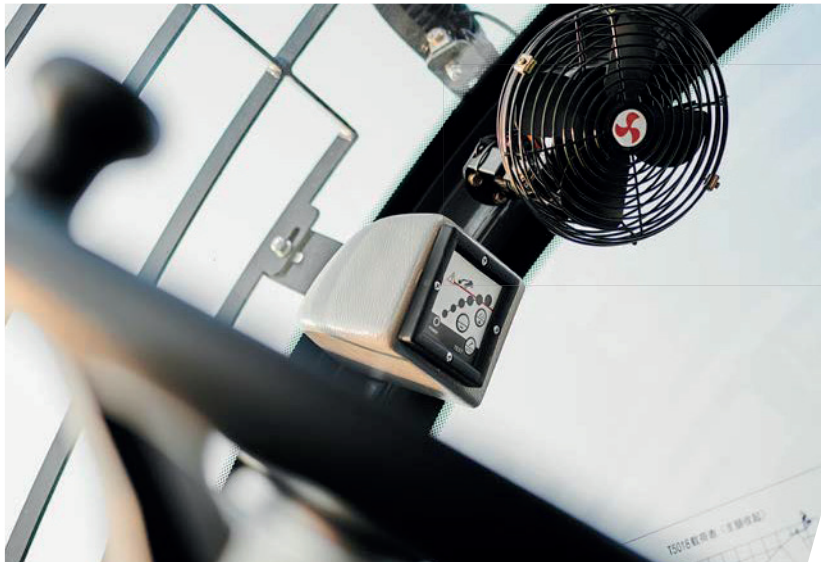
# STABILIZERS

## STABILIZERS

Outrigger position detection sensors are fitted as standard for safer operation.







### Anti-trip warning system and overload protection function

Internationally recognized brand load limiter. Real-time monitoring of the rear axle load status. Quick warning alerts for overload.

- Fully electrically controlled with CAN bus communication.
- The booms use electro-hydraulic proportional control for compound movements.
- The emergency stop button stops all actions quickly in case of emergency.

### Powertrain

The vehicle has world-renowned wet brake axles, 4x4 traction and steering. Hydrostatic 4-wheel drive: Powered by a Cummins engine, it uses a closed hydraulic pump-motor system for infinite speed variation, reaching speeds of up to 35 km/h.





# 02

EXCELLENT  
DESIGN







### Independent cooling system

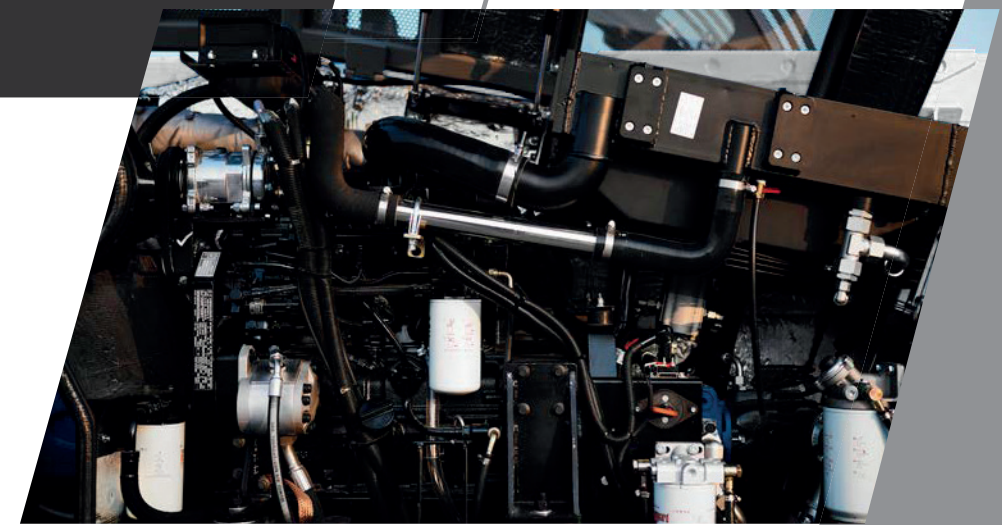
- | Automatic start and stop of the cooling system.
- | Reverse fan function to clean debris from the cooling system.

### Inch function

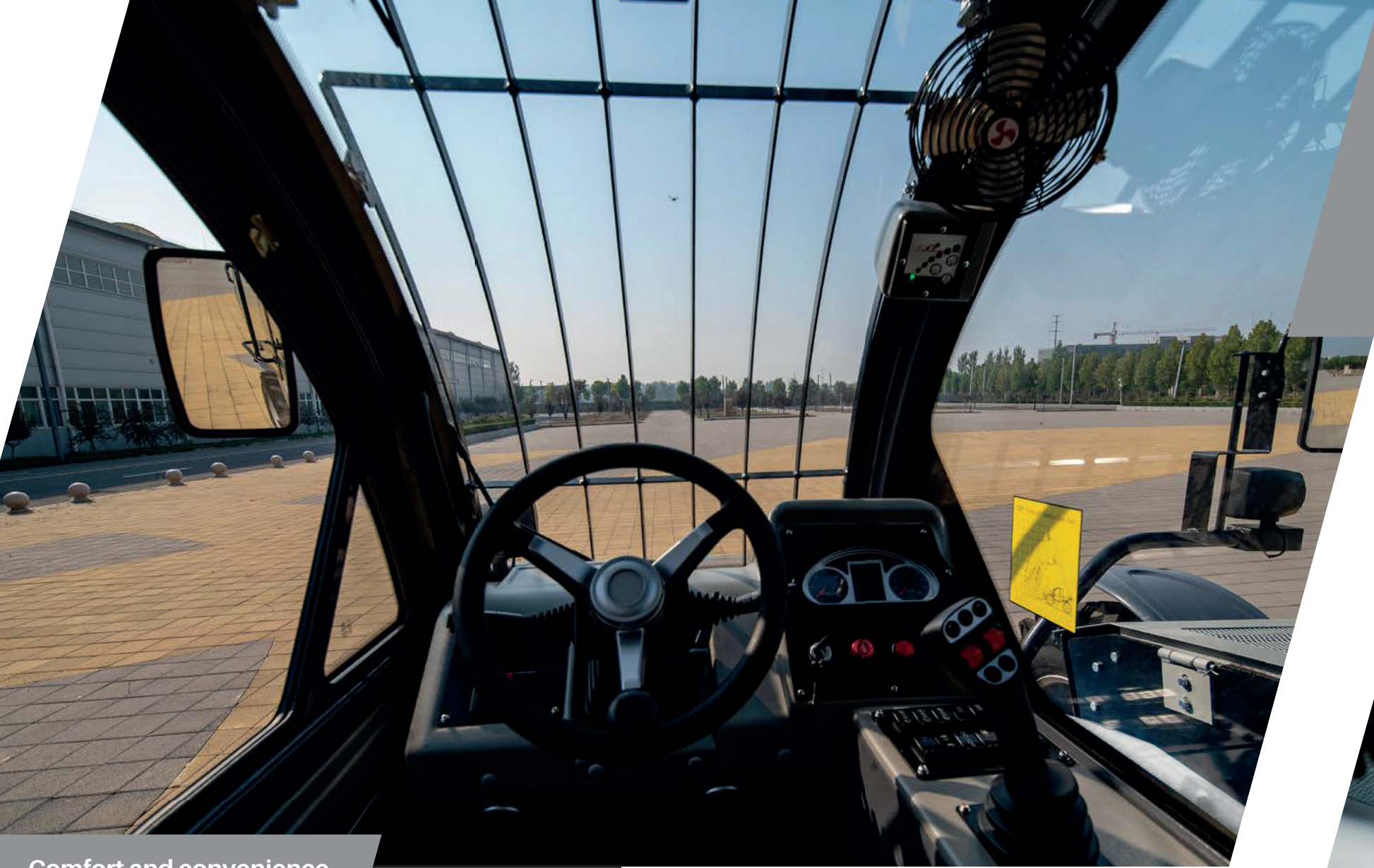
Realize motion control by micro-motion and improve the accuracy and safety of boom control.

### Motor

- | Improved air conditioning and soundproofing; Engine compartment lined with noise-absorbing cotton.
- | Optional engines available to meet emissions regulations in various countries, compatible with emissions standards up to Euro V.







### Comfort and convenience

| Instruments are ergonomically located at the front right of the cabin, improving forward visibility and facilitating precise control over arm movements and vehicle navigation.

- | New cabin design: spacious with armrests, improved screens.
- | Centralized boom control near the right grip for easy operation.
- | 360-degree panoramic glass cockpit for greater visibility.







# 03

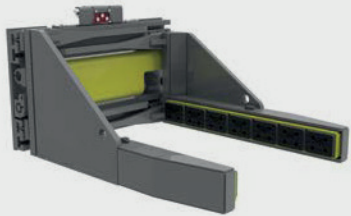
**DIVERSITY OF  
FUNCTIONS**



## Quick change accessory

Teleshandler accessories offer quick-change capability, allowing one person to switch between multiple tools. MAVERICK offers a range of accessories, including forks (standard), buckets, hooks, work buckets, sweepers and scrapers, tailored to different customer needs.

Clamps



Forks



Platform



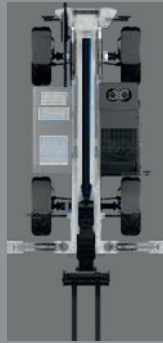
Bucket



Elevator



Gallows



One-touch mode switching for vehicle control, meeting the preferences of European and American customers.











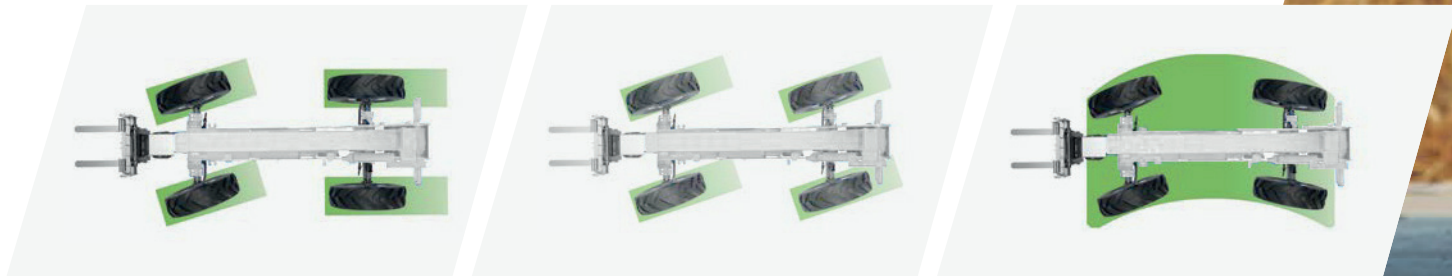
# 04

**DIFFICULT  
TERRAIN**





- || **Three steering modes:** Front-wheel, four-wheel and crab steering for versatile terrain navigation.
- || The chassis with body leveling system (-7~7°) ensures stability on steep slopes.
- || The rear axle RASS system allows flexibility, floating and locking.















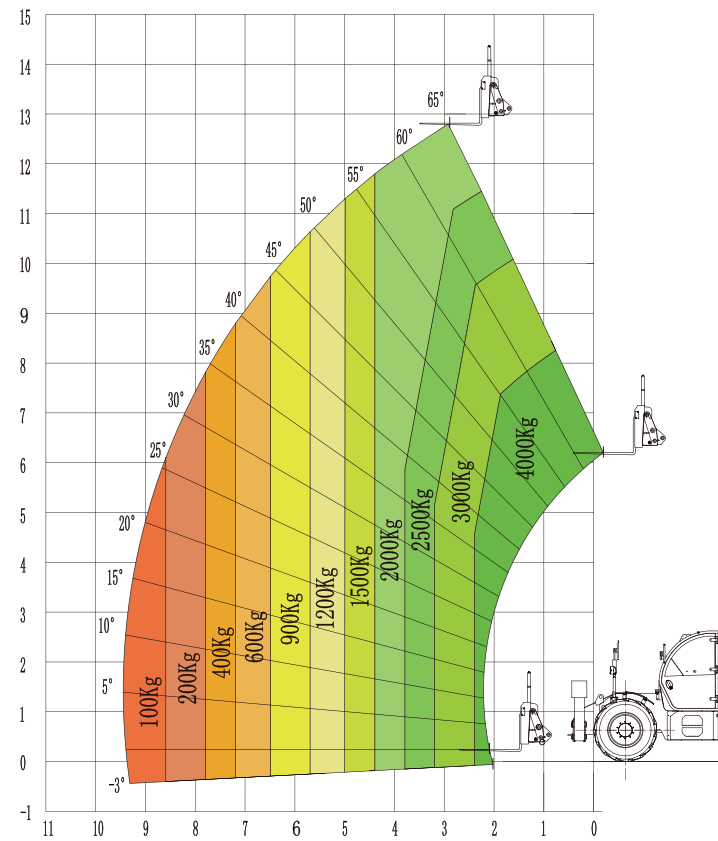


# PRODUCT PARAMETER

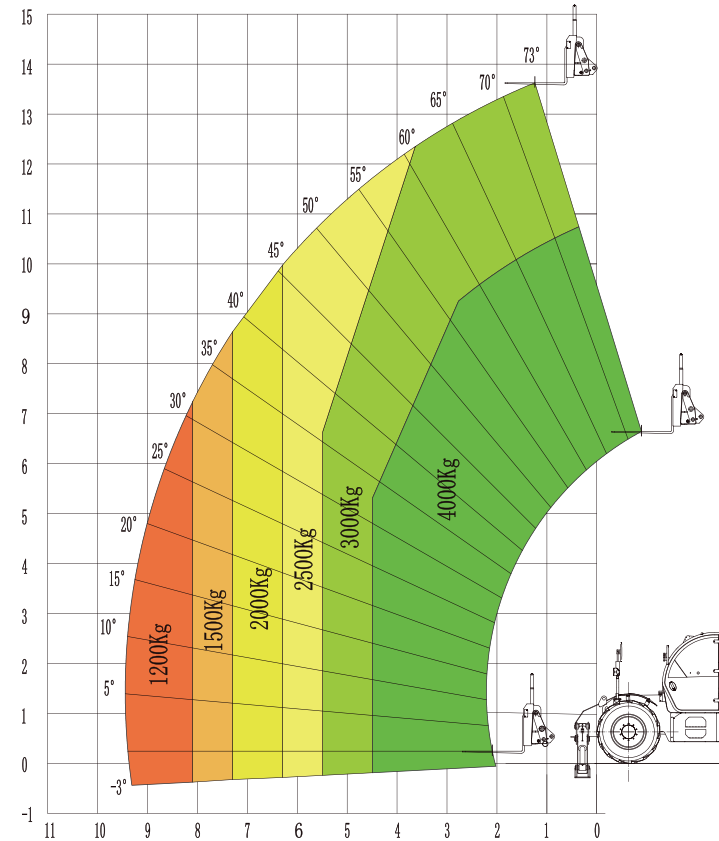
## MVT4014

Capacity/kg	Maximum lifting height/mm	Power/kw	Total weight/kg	L*W*H (with fork)/mm
4000	13700	92	10890	7705*2460*2600

MVT4014 Load Chart (Stabilizers Up)



MVT4014 Load Chart (Stabilizers Below)

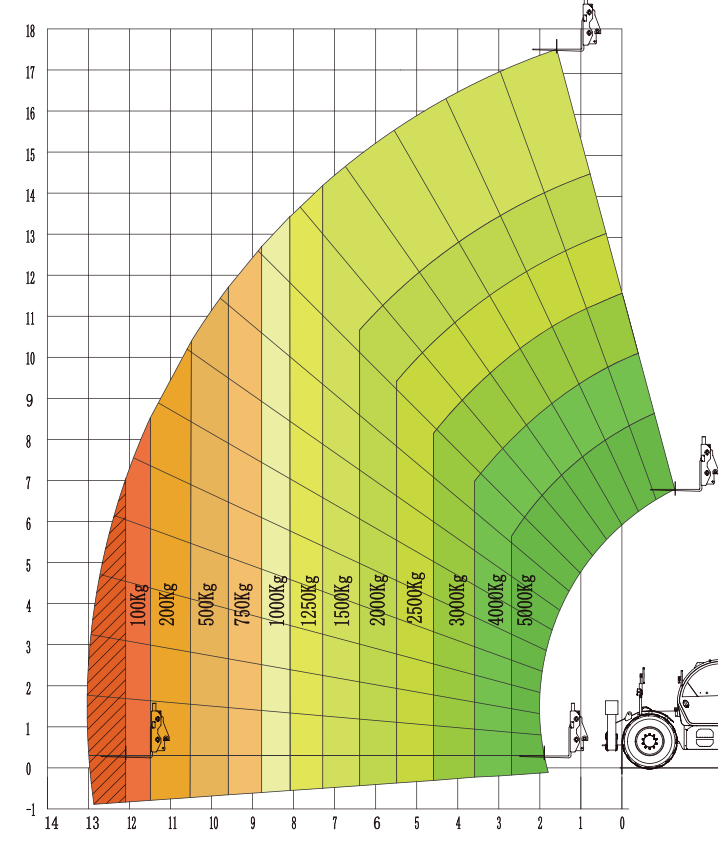


# PRODUCT PARAMETER

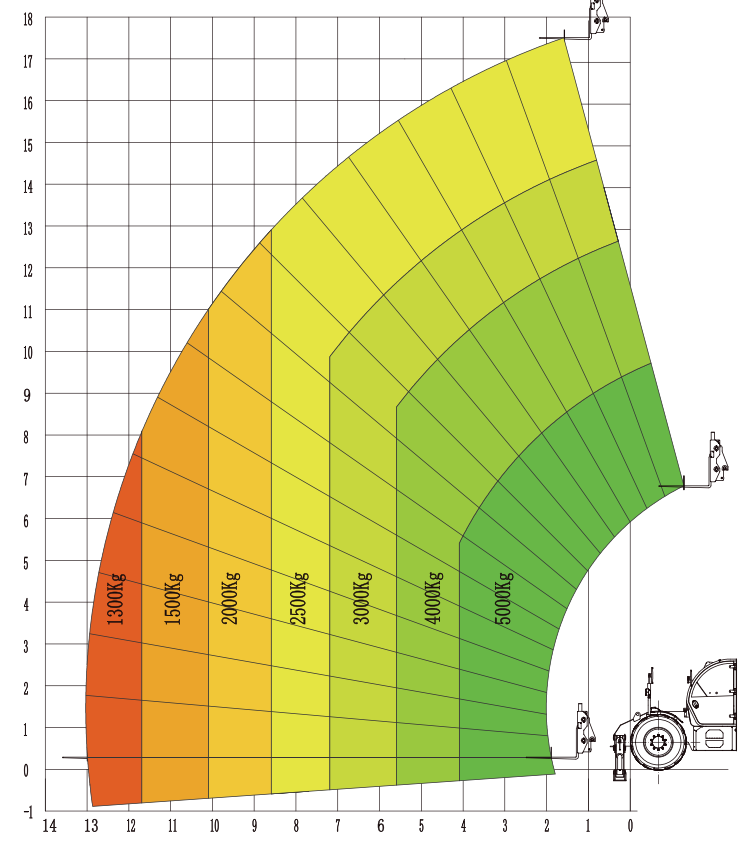
## MVT5018

Capacity/kg	Maximum lifting height/mm	Power/kw	Total weight/kg	L*W*H (with fork)/mm
5000	17600	92	14380	7765*2460*2650

MVT5018 Load Chart (Stabilizers Up)



MVT5018 Load Chart (Stabilizers Below)



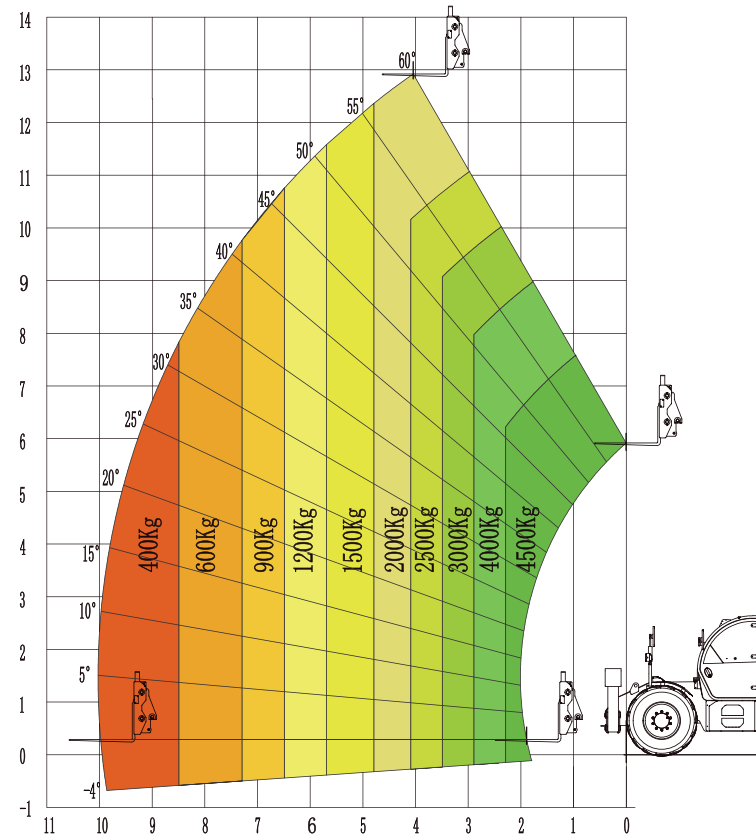


# PRODUCT PARAMETER

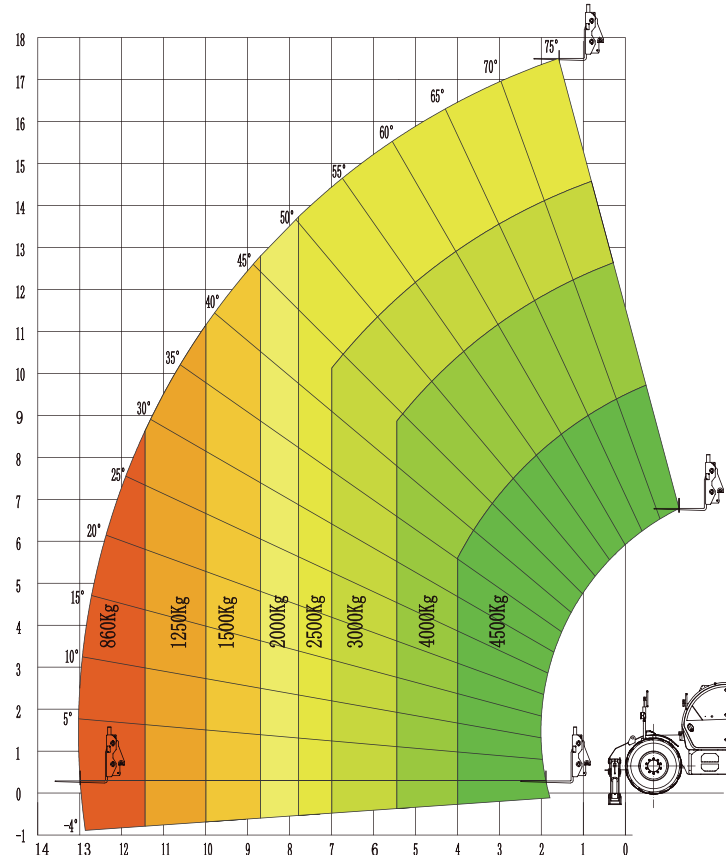
## MVT4517

Capacity/kg	Maximum lifting height/mm	Power/kw	Total weight/kg	L*W*H (with fork)/mm
4500	17600	92	14080	7760*2460*2650

MVT4517 Load Chart (Stabilizers Up)



MVT4517 Load Chart (Stabilizers Below)



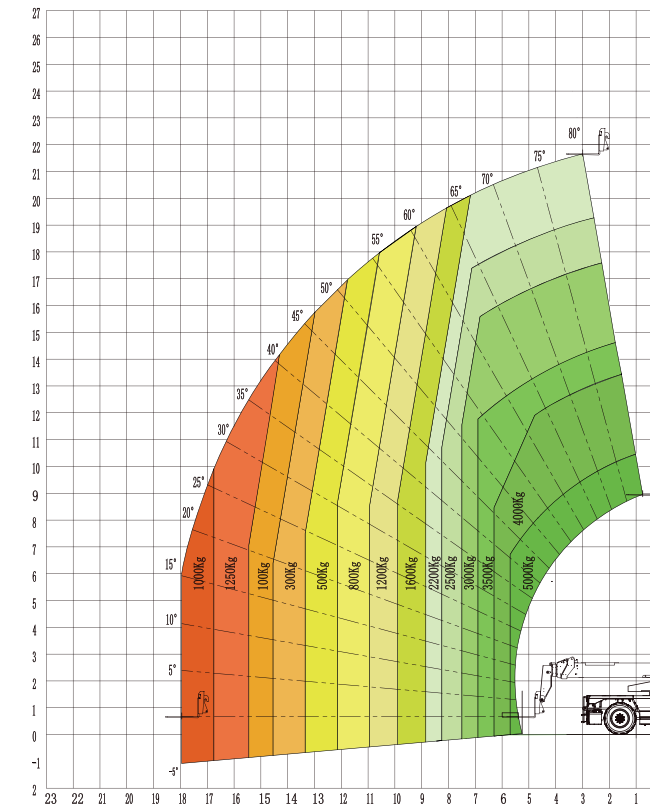
## MVRT6025

Capacity/kg	Maximum lifting height/mm	Power/kw	Total weight/kg	L*W*H (with fork)/mm
6000	24700	110	18950	8980*2500*3150

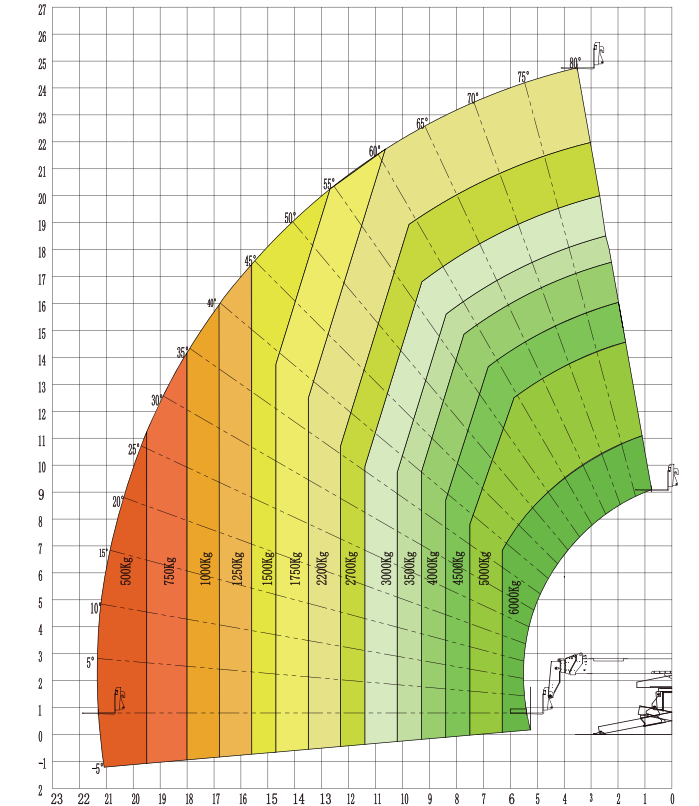
## MVRT7030

Capacity/kg	Maximum lifting height/mm	Power/kw	Total weight/kg	L*W*H (with fork)/mm
7000	29600	160	22560	9030*2550*3250

MVRT6025 Load Chart (Stabilizers Up)



MVRT6025 Load Chart (Stabilizers Down)



\*The company's products are constantly updated and improved, and we reserve the right to change parameters and design without prior notice to users. If there is any difference between the product configuration and parameters in the item and the actual model, the actual product shall prevail.



**MAVERICK**  
MATERIAL HANDLING